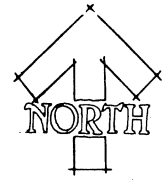


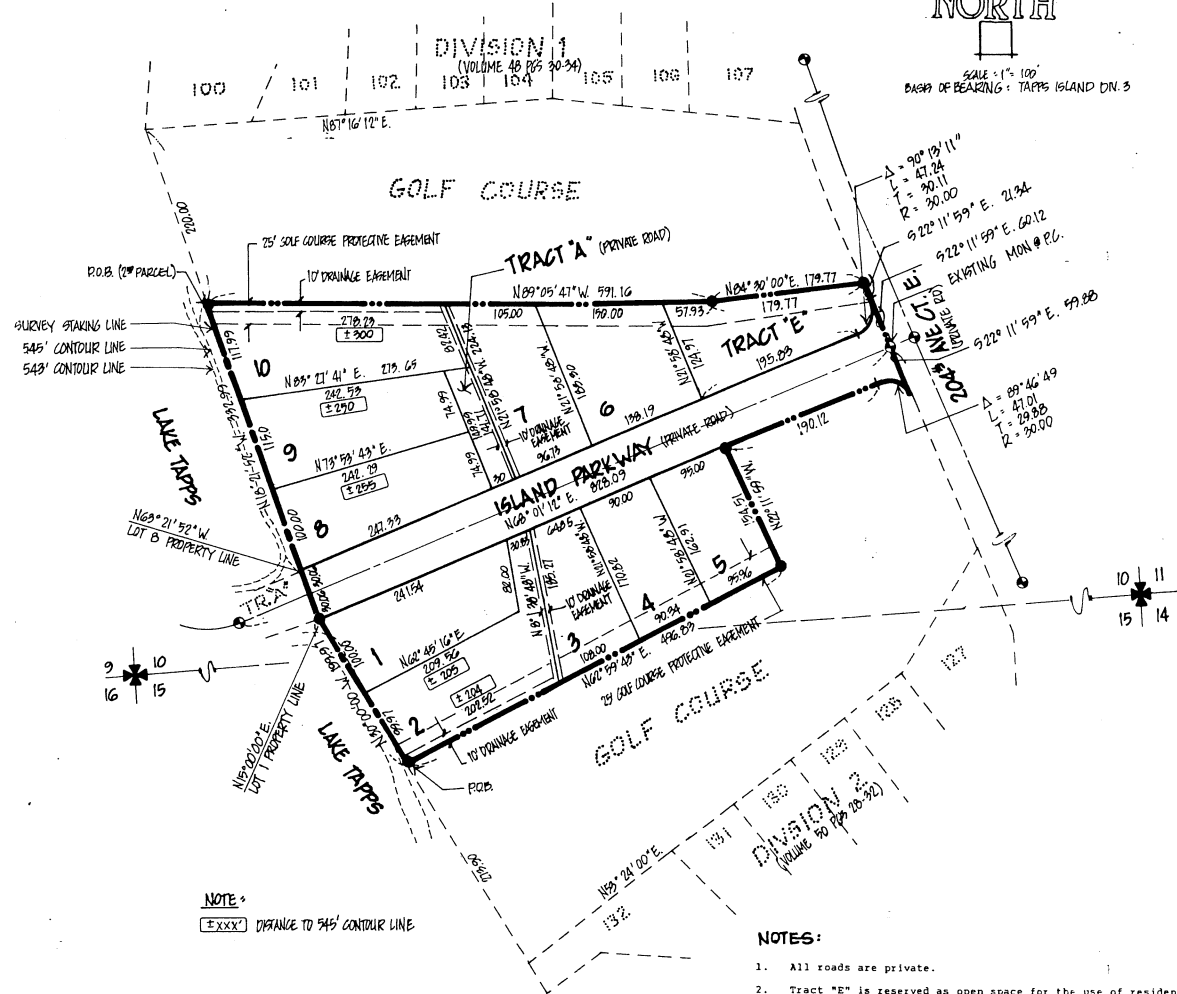
TAPPS ISLAND DIVISION NO. 4

A PORTION OF

SOUTH HALF OF SECTION 10, & NORTH HALF OF SECTION 15, TOWNSHIP 20N, RANGE 5E, WM AND A REPLAT OF TRACT A OF TAPPS ISLAND DIVISION NO.2 PIERCE COUNTY, WA.



SCALE - 1" = 100'
 BASED ON BEARING - TAPPS ISLAND DIV. 3



NOTE -
 [E XXX] DISTANCE TO 545' CONTOUR LINE

NOTES:

1. All roads are private.
2. Tract "E" is reserved as open space for the use of residents within the Tapps Island subdivision.
3. Tract "A" is for access and utilities for lots 9 & 10.
4. The use and development of the lots contained within this subdivision are approved for single-family use which shall be binding upon the property for the full term of the preliminary plat approval and for a period of five years from the date of recording of the final plat for this subdivision.
5. Each and every lot owner will be responsible for controlling the stormwater runoff that will be created by the development of this plat.

PROTECTIVE COVENANTS

ALL LOTS IN THIS PLAT ARE SUBJECT TO THE ARTICLES AND BY-LAWS OF THE TAPPS ISLAND ASSOCIATION, A NON-PROFIT WASHINGTON CORPORATION AND RESTRICTIONS AS RECORDED UNDER PIERCE COUNTY AUDITORS FEE NO. 8811290201

LEGEND

- EXISTING CONCRETE MONUMENTS
- PIERCE COUNTY STANDARD MONUMENT SET
- SURVEY STAKING LINE
- ✕ SECTION CORNER AS INDICATED

SURVEYOR'S CERTIFICATE

I HERBY CERTIFY THAT THIS PLAT IS BASED ON AN ACTUAL SURVEY DONE BY ME OR UNDER MY DIRECT SUPERVISION; THAT THE BEARINGS AND DISTANCES ARE SHOWN CORRECTLY; THAT THE PERIMETER MONUMENTS HAVE BEEN SET AND THAT ALL OTHER MONUMENTS AND LOT CORNERS HAVE BEEN SET OR BONDED WITH THE COUNTY AND WILL BE SET PRIOR TO THE RELEASE OF THE BOND; THAT I HAVE COMPLIED WITH ALL STATE AND COUNTY REGULATIONS GOVERNING PLATTING AND THAT IT CONFORMS TO THE APPROVED PRELIMINARY PLAT AND THE CONDITIONS OF APPROVAL THEREOF.

FLOYD ARCHER, PLS. # 11539 *Floyd Archer* DATE *9/15/88*



8903220287
 FLOYD ARCHER
 1414 DEXTER AVE. N. SUITE 326
 SEATTLE, WA, 98109
 (206) 284-9800

NO. 0535 PAGE 1779

11-10-88